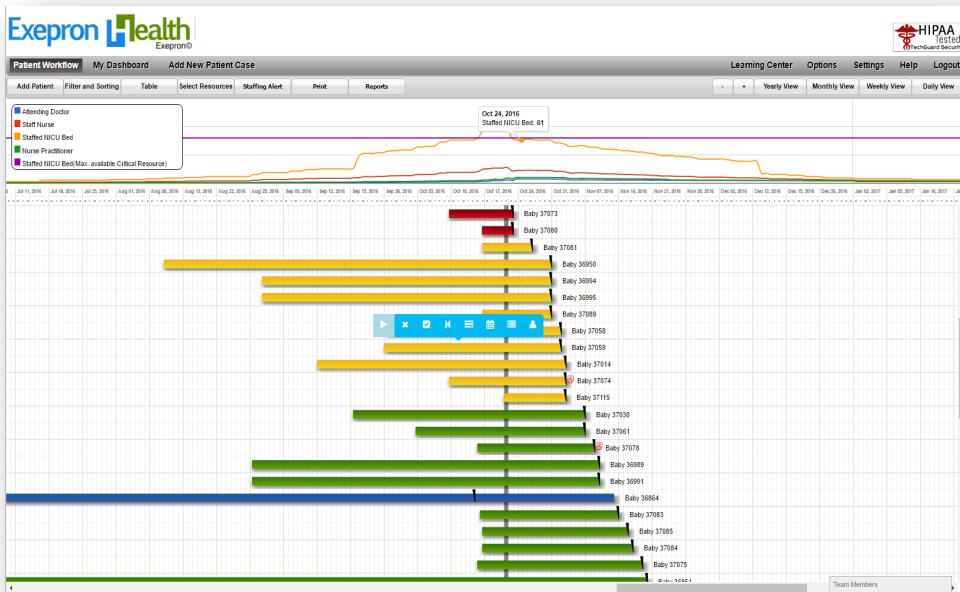


PATIENT CENTERED PREDICTIVE RESOURCE MANAGEMENT



Exepron Health
Facilitates
the Transition from:

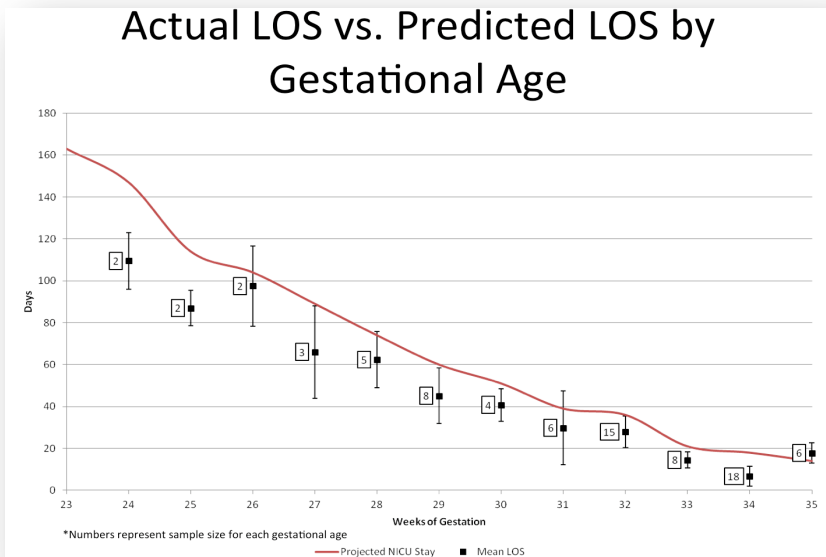
Fee for Service
to
*Value-based
Reimbursement!*

EXEPRON HEALTH – SaaS, HIPAA compliant, Enterprise Solution

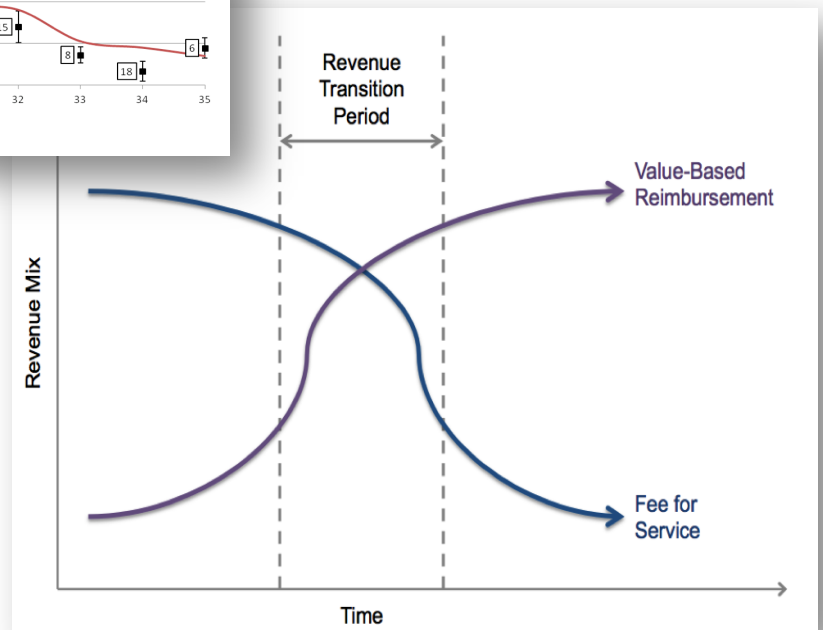
- ✓ Predictive Management of Resources, including Critical Resources
- ✓ Advanced Planning and Scheduling with forward-looking intelligence
- ✓ Manage Patient Flow in real-time – predictive and dynamic visibility of each Patient stay
- ✓ Predictive, Focused Priority System of real-time resource load-sharing to indicate current and future resource requirements
- ✓ Healthcare centric Dashboards and metrics to support Patient Care, Executive, Management and Administration decisions, including:
 - ✓ Critical Resource Requirements planning,
 - ✓ Patient Flow Analysis, Cost Tracking and Revenue
 - ✓ Analysis of past and current performance.
- ✓ Exepron Health Transformation Services include: Implementation, Training, Planning, Scheduling and Execution procedures.

Exepron Health assisting Hospitals Transition to Value-based Reimbursement

- 1) Focus on shared savings programs to maximize reimbursement.
- 2) Improve operating costs by delivering efficient care – streamline and eliminate waste.
- 3) Capture more patients as a Top Performer!



LOS: Length of Stay



Contact: CustomerSupport@Exepron.com

WWW.EXEPRON.COM